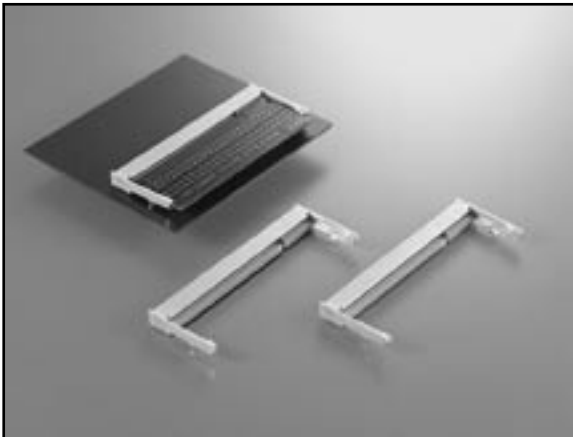


MM50 SERIES CONNECTORS

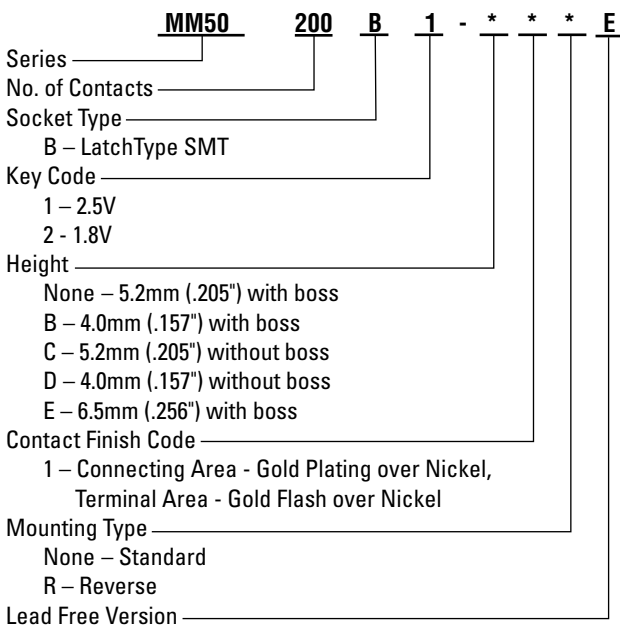
0.6mm (.024") Contact Spacing, SO-DIMM Socket Connectors



FEATURES

- Mounting Height 4.0mm (.157") to 6.5mm (.256")
- Standard or reverse mount
- LIF structure for insertion of DIMM board
- Metal spring in key for securing positioning of module
- Memory module board thickness 1.0mm (.039")

ORDERING INFORMATION



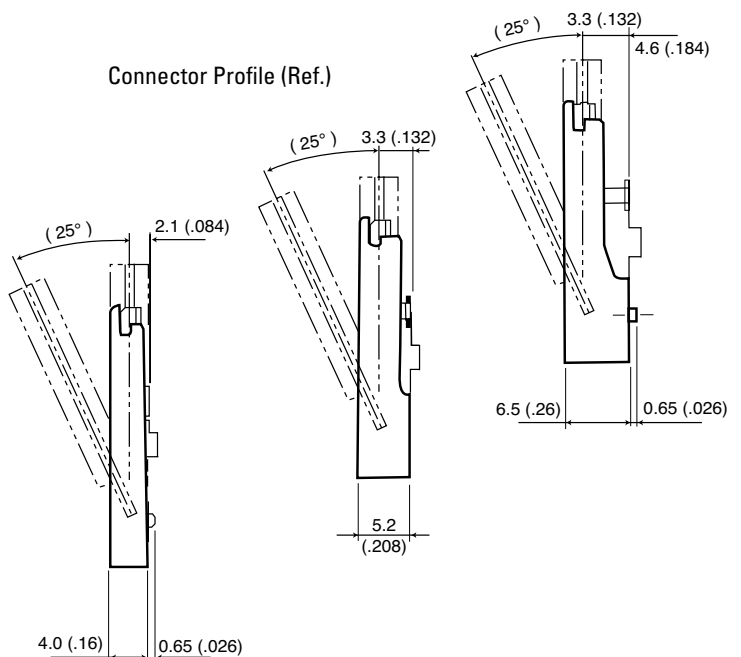
The MM50 series are sockets for DDR, SDRAM and SO-DIMM's. The DDR SDRAM transmits 2 times faster than the present standard by reading and writing during rise and fall of the clock signals.

GENERAL SPECIFICATIONS

Number of Contacts	200
Contact Spacing	0.6mm (.024")
Current Rating	0.3 Amp per contact
Dielectric Withstanding Voltage	500 VAC r.m.s. (for one minute)
Insulation Resistance	100 megohms
Contact Resistance	40 milliohms
Operating Temperature	-55°C to +105°C

MATERIALS AND FINISHES*

Description	Materials/Finishes
Insulator	Glass-filled LCP (UL94V-0, Ivory)
Contact	Copper Alloy Connecting area: Gold plating 0.1μ (.000004") min. over Nickel Terminal area: Gold flash over Nickel
Hold down	Copper/Tin over Nickel
Key	Stainless Steel



• Please consult JAE for verification of product availability.

Dimensions and specifications subject to change without notice.