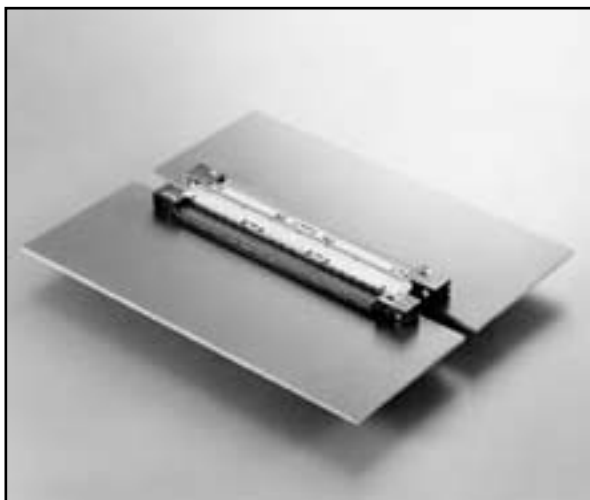


KX20 SERIES CONNECTORS

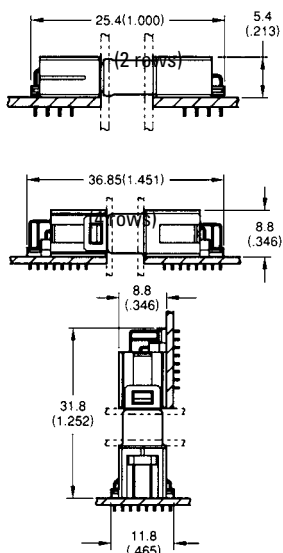
0.8mm (.031") Contact Spacing, EMI Shielded, PCB-to-PCB Connectors



FEATURES

- EMI shielding
- 0.8mm (.031") contact spacing
- First-to-make-last-to-break contacts for receptacles (4 contacts at each end)
- Mating guide
- Ribbon type contacts to prevent twisting force

Connector Profile (Ref.)



The KX20 Series of connectors are designed for high density PCB-to-PCB applications. The connectors enable horizontal and vertical (100 contacts only) connection between units.

The connectors have contact spacing of 0.8mm (.031") and are EMI shielded. They are ideal for interconnecting products such as personal computers and word processors to other units.

GENERAL SPECIFICATIONS

Number of Contacts	2 rows: 50, 80 4 rows: 100, 200, 240
Contact Spacing	0.8mm (.031")
Current Rating	0.5 Amp per contact
Dielectric Withstanding Voltage	250 VAC r.m.s. (for one minute)
Insulation Resistance	100 megohms min.
Contact Resistance	70 milliohms max.
Operating Temperature	-40°C to +80°C

MATERIALS AND FINISHES*

Description	Materials/Finishes
Shell	Steel/Nickel Plate
Insulator	
Two Row, 50, 80 Contacts	Glass-Filled PPS/UL94V-0, Black
Four Row, 100 Contacts	Glass-Filled LCP/UL94V-0, Black
Four Row, 200, 240 Contacts	Glass-Filled LCP/UL94V-0, Black
Locator	
Two Row, 50, 80 Contacts	Glass Filled PPS/UL94V-0, Black
Four Row, 100 Contacts	Glass Filled PBT/UL94V-0, Black
Four Row, 200, 240 Contacts	Glass Filled LCP/UL94V-0, Black
Contact	Phosphor Bronze Connection Area: Gold plating, 0.1µm (.000004") min. over Palladium Nickel Terminal Area: Tin plating
Grounding Lug (Note 1)	Zinc Alloy/Tin plating
Hook Pin (Note 2)	Phosphor Bronze/Tin plating
Guide Screw	Zinc Alloy/Nickel plating

Note 1: For right angle type except 120 contacts plug.

Note 2: For right angle type.

Consult JAE for "Ordering Information".

* Please consult JAE for verification of product availability.

Dimensions in mm (inches).