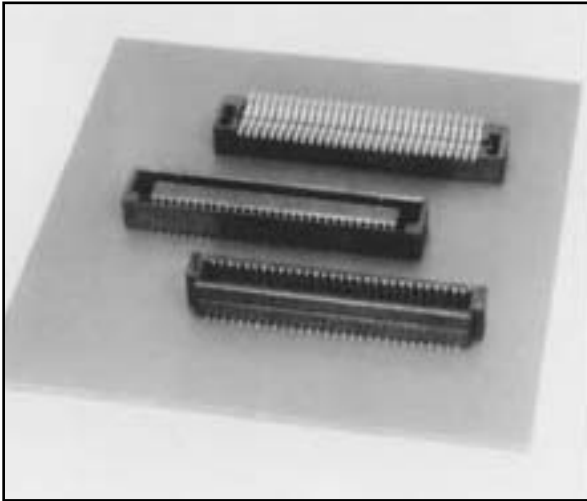


KX14/15 SERIES CONNECTORS

0.8mm (.031") Contact Spacing, PCB-to-PCB SMT Connectors



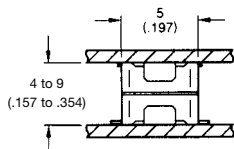
The KX14/15 Series connectors are low profile, SMT type connectors for PCB-to-PCB applications. Contact spacing is 0.8mm (.031"). The receptacle (KX14) and plug (KX15) combination offer variable stacking heights of 4 to 9mm (.157 to .354").

These connectors are ideal for use in the personal computer industry where space, weight and high density are critical factors.

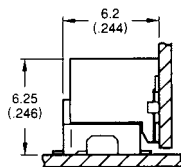
FEATURES

- 0.8mm (.031") contact spacing
- Straight receptacle (KX14) and right angle/straight plug (KX15) for parallel and vertical PCB connections
- 4 to 18mm (.157 to .709") stacking heights
- Polarization key prevents mismatching
- Resistant to vibration and twisting
- Available in embossed tape for automatic mounting

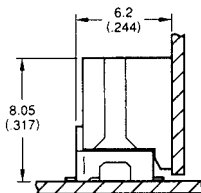
Connector Profile (Ref.)



Hold-down type (Right-angle side)



Screw type (Right-angle side)



GENERAL SPECIFICATIONS

Number of Contacts	Straight: 20, 30, 40, 50, 60, 70, 80, 100, 120, 140, 160 Right Angle: 20, 30, 40, 50, 60, 70, 80, 140
Contact Spacing	0.8mm (.031") Double Row
Current Rating	0.5 Amp per contact
Dielectric Withstanding Voltage	500 VAC r.m.s. (for one minute)
Insulation Resistance	100 megohms min.
Contact Resistance	70 milliohms max.
Operating Temperature	-40°C to +85°C
Voltage Rating	AC 200V, DC 300V

Note 1: Please consult JAE for availability

MATERIALS AND FINISHES*

Description	Materials/Finishes
Insulator	
	KX14 Glass-filled LCP (UL94V-0 Black)
	KX15 Straight Glass-filled PPS (UL94V-0 Black)
	KX15 Right Angle Glass-filled LCP (UL94V-0 Black)
Contact	Copper Alloy Connecting Area: 0.1µm (.000004") min. Gold Plating Over Nickel Terminal Area: Gold flash over Nickel or Tin-Lead over Nickel
Hold Down	Copper Alloy/Tin-Lead over Nickel
Hook Pin	Copper Alloy/Tin plating
Hexagon Nut	Brass/Nickel plating

*Please contact JAE for lead-free product availability.

• Please consult JAE for verification of product availability.

Dimensions and specifications subject to change without notice.